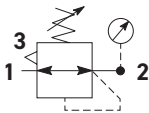
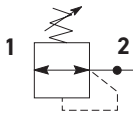


P31 Regulators – Mini

- Integral 1/4" ports (NPT, BSPP & BSPT)
- Robust but lightweight aluminum construction
- Secondary pressure ranges
- Secondary aspiration plus balanced poppet provides quick response and accurate pressure regulation.
- Relieving & non-relieving types
- Non-rising knob



Self relieving regulator with gauge



Non-relieving regulator

Port Size	Description (Relieving)	Gauge	Part Number
1/4"	125 psig (8 bar)	Square	P31RB92BN5P

Operating information

Flow capacity*:	1/4	73 scfm (34 dm³/s, ANR)
Operating temperature†:		-4°F to 150°F (-20°C to 65.5°C)
Supply pressure (max):		300 psig (20 bar)
Adjusting range pressure:		30 psig (0-2 bar) 60 psig (0-4 bar) 125 psig (0-8 bar) 232 psig (0-16 bar)
Weight:		0.37 lb (0.17 kg)
* Inlet pressure 145 psig (10 bar). Secondary pressure 100 psig (6.9 bar) and 14.5 psig (1 bar) pressure drop. .		
† Units with square gauges: 5°F to 150°F (-15°C to 65.5°C)		

Gauge supplied with every part. Gauge can be installed on the front or back of the regulator. If no gauge is installed, both seal screws must be installed.

Ordering Information:

P31RB

9

2

B

N

5

P

Basic Series

Global Modular Mini Regulator

P31RB

Thread Type

BSPP 1

BSPT 2

NPT 9

Port Size

1/4 2

Relief

Relieving B

Non-Relieving N

Reverse Flow - Relieving R

Mounting

P Plastic Panel Mount Nut

Adjustment Range

With Square Gauge

psig	Bar	MPa
1 = 30*	V = 2*	2 = 0.2*
3 = 60	S = 4	4 = 0.4
5 = 125	T = 8	6 = 0.8
7 = 232	W = 16	8 = 1.6

Adjustment

N Non-Rising Knob

* Regulator comes with gauge respective to the adjustment range available.

Most popular.



For inventory, lead times, and kit

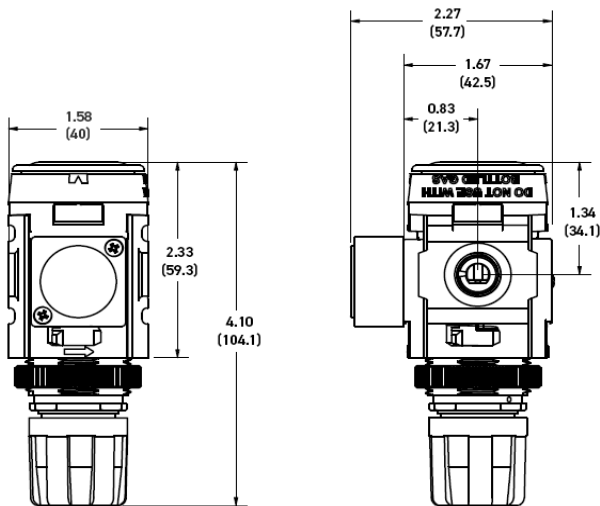
MINI Regulators

Material Specifications

Body	Aluminum
Adjustment knob	Acetal
Bonnet	Glass-filled nylon
Diaphragm assembly	Stainless steel / Nitrile
Valve assembly	Acetal/ Nitrile
Springs	Steel
Seals	Nitrile
Panel nut	Acetal
Bottom Cap	Glass-filled nylon

Repair and Service Kits

Panel mount nut - aluminum	P31KA00MM
Panel mount nut - plastic	P31KA00MP
Angle bracket (attaches via panel nut)	P31KB00MR
C-bracket (fits to body)	P31KA00MW
T-bracket with body connector	P31KA00MT
Body connector	P31KA00CB



NOTE: 1.20 in. (30mm) hole required for panel nut mounting.



WARNING

**Product rupture can cause serious injury.
Do not connect regulator to bottled gas.
Do not exceed Maximum primary pressure rating.**

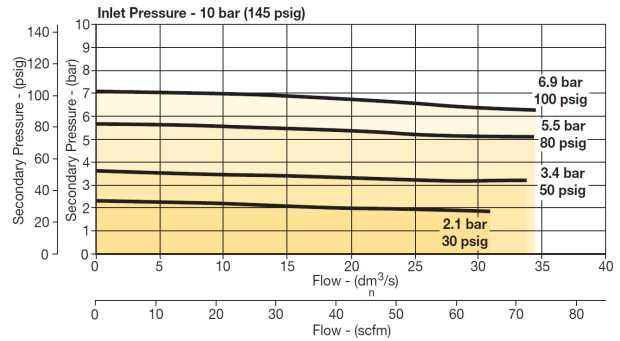
CAUTION:

REGULATOR PRESSURE ADJUSTMENT – The working range of knob adjustment is designed to permit outlet pressures within their full range. Pressure adjustment beyond this range is also possible because the knob is not a limiting device. This is a common characteristic of most industrial regulators, and limiting devices may be obtained only by special design. For best performance, regulated pressure should always be set by increasing the pressure up to the desired setting.

MINIature / Inline

Flow Charts

P31RB 1/4" Regulator



Gauges (*see note below)

Square flush mount gauge	0-060 psig	P31KA060XB
	0-160 psig	P31KA160XB
	0-290 psig	P31KA290XB
	0-4 bar	P31KA04BXB
	0-11 bar	P31KA11BXB
	0-20 bar	P31KA20BXB
	0-0.4 MPa	P31KA04MXB
Square flush mount gauge	0-1.1 MPa	P31KA11MXB
	0-2.0 MPa	P31KA20MXB
Square with adapter kit	0-4 bar	K4511SCR04B
	0-11 bar	K4511SCR11B
	0-60 psig	K4511SCR060
	0-160 psig	K4511SCR160
1.00" Round 1/8" center back mount	0-60 psig / 1-4 bar	K4510N18060
	0-160 psig / 0-11 bar	K4510N18160
40mm Round 1/8" center back mount (not for use with common port regulators)	0-30 psig / 0-2 bar	K4515N18030
	0-60 psig / 0-4 bar	K4515N18060
	0-160 psig / 0-11bar	K4515N18160

For best performance, regulated pressure should always be set by increasing the pressure up to the desired setting.

***For P31 Regulators with date code after November 2023 (4423 Date Code), please use these part numbers when ordering a replacement gauge.**



For inventory, lead times, and kit